

Chengdu Tianfu International Airport Terminal 2 Arrival Gate to Group Bus Route Guidance:

成都天府国际机场 2 号航站楼到达口至团队大巴线路指引:

Step 1:

1. When you arrive in Chengdu, you will exit from the B1 or B2 arrival gate. At this point, you will need to follow the directions indicated by the "Team Bus" icon on the ground. 您抵达成都后会从 B1 或 B2 到达口出来。这时，您需要根据地面图标“团队大巴”指示方向往前走。



Step 2:

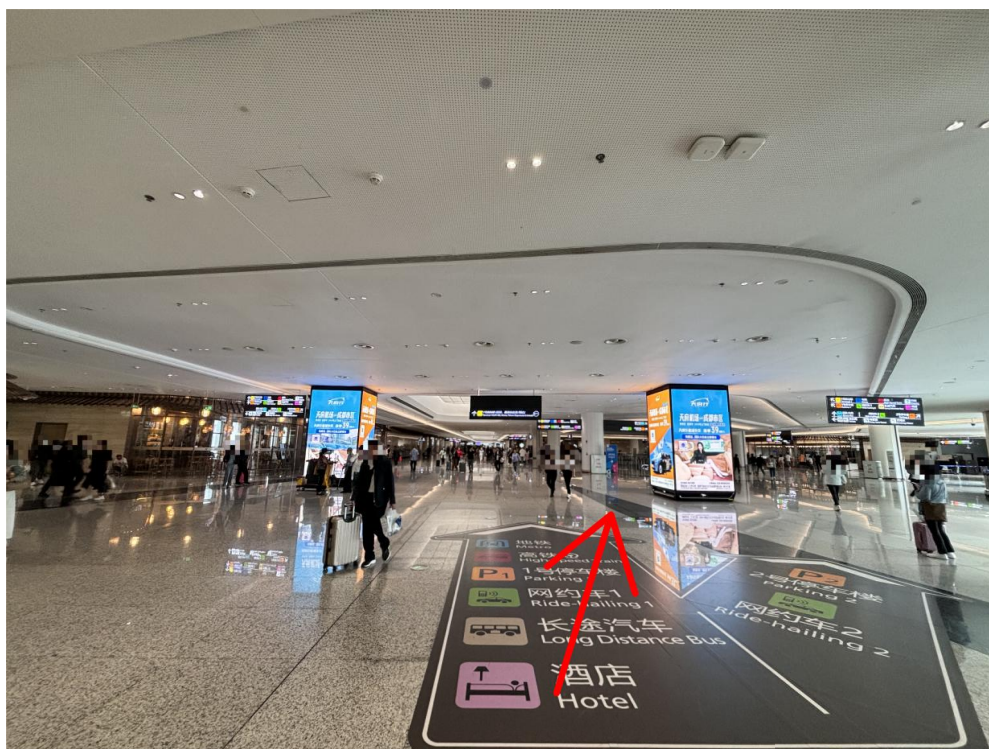
Forward direct

前方直行



Step 3:

Continue straight ahead; the " Group Bus " signage will be directly ahead or slightly to your right. 前方直行（“团队大巴”会在您的正前方或是右前方）



Step 4:

Once you see the " Group Bus " sign, please proceed downstairs via the escalator.

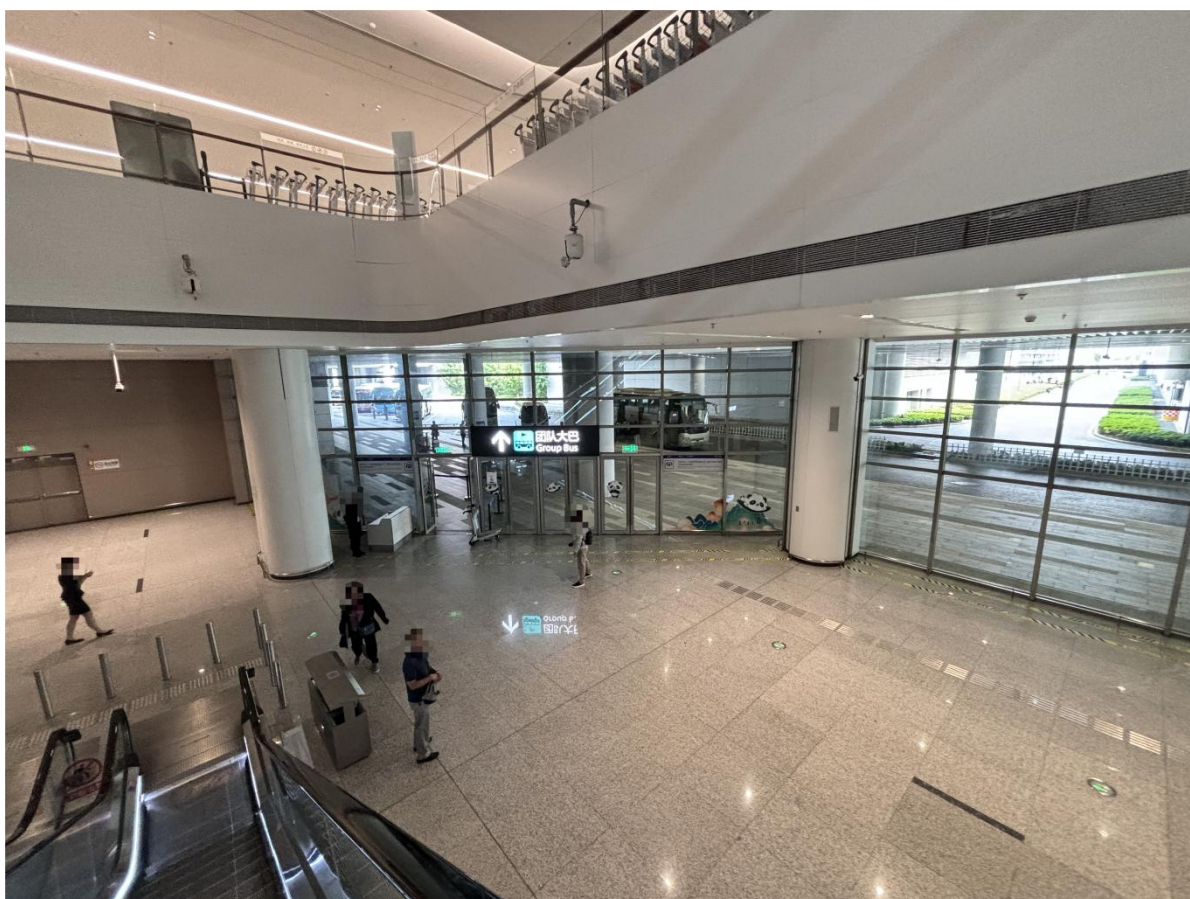
看见“团队大巴”标识沿扶梯下楼



Step 5:

After descending the escalator, please exit through the glass door to reach the designated meeting shuttle bus stop (Note: This door is for exit only).

下扶梯后，您需要从玻璃门出去到达会议大巴车停靠位置（备注：此门仅为出口，禁止进入）



Note: The conference bus has the name of the conference logo, please pay attention to the boarding time.

注：会议大巴车均有会议名称标识，请您注意乘车时间。